

# Line Changer (3 Way Ball Valve)

2", 2½" & 3"

The Line Changer (3 Way Ball Valve) is designed to divert flow of water in the piping system to irrigate two different fields.



## HIGHLIGHTS

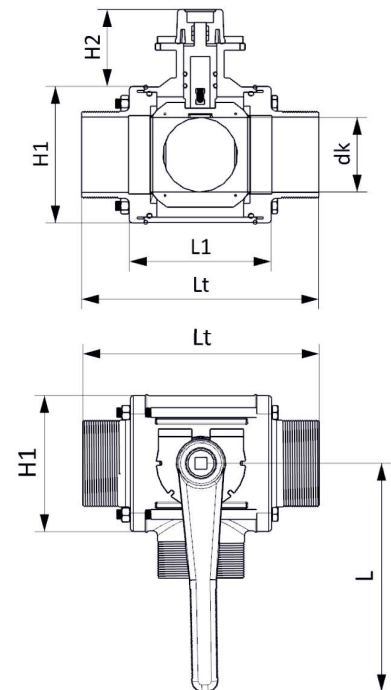
- **Connection Sizes:** Available in 2", 2 ½ " & 3" male threaded (BSP/NPT) end connections.
- **Lightweight Aluminum Construction:** Durable and easy to handle.
- **Long Handle Design:** Facilitates effortless opening and closing of valve.
- **Handle Locking Feature:** To prevent unwanted handle movement during operation.
- **Max Operating Pressure:** (PN: 6) rated valves.
- **Flow Diversion:** Easy to divert full pipe flow in required direction.
- **Partial Flow Control:** Supports flow variations of 25% and 75% between two separate irrigation systems.
- **Maintenance Friendly:** Designed for inline maintenance and easy dismantling.

## APPLICATIONS

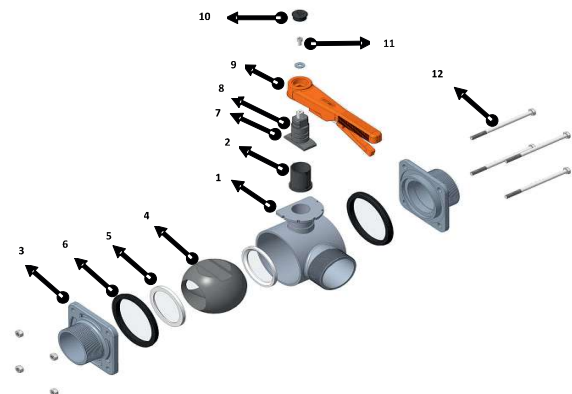
- Agriculture and landscape irrigation



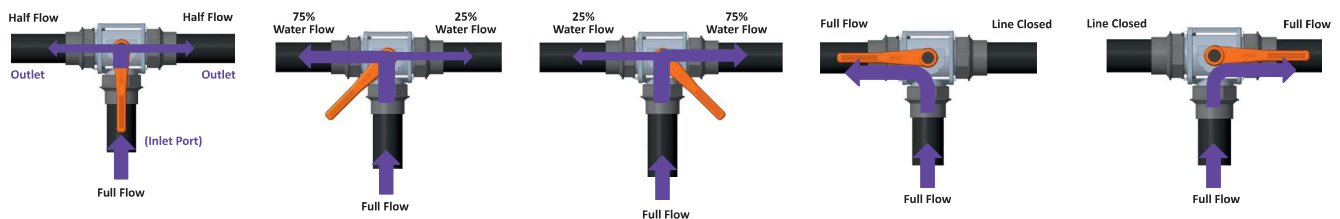
Product Dimensions				
Dimensions		Valve Size		
		2"	2½"	3"
TPI	BSP	11	11	11
	NPT	11.5	8	8
dk	CM	4.9	5.9	7.6
	INCH	1 <sup>59</sup> / <sub>64</sub>	2 <sup>21</sup> / <sub>64</sub>	2 <sup>63</sup> / <sub>64</sub>
H1	CM	4.8	10.7	13.8
	INCH	1 <sup>57</sup> / <sub>64</sub>	4 <sup>7</sup> / <sub>32</sub>	5 <sup>7</sup> / <sub>16</sub>
H2	CM	9.5	8.9	8.9
	INCH	3 <sup>47</sup> / <sub>64</sub>	3 ½	3 ½
L1	CM	8.9	11.3	13
	INCH	3 ½	4 <sup>29</sup> / <sub>64</sub>	5 ⅛
Lt	CM	15.1	19.1	21.8
	INCH	5 <sup>15</sup> / <sub>16</sub>	7 <sup>33</sup> / <sub>64</sub>	8 <sup>37</sup> / <sub>64</sub>
L	CM	14	23	23
	INCH	5 <sup>33</sup> / <sub>64</sub>	9 ⅛	9 ⅛



Material Specification			
Part No	Part Name	Material	Quantity
1	Body	Aluminum	1
2	Body Sleeve	POM	1
3	Flange	Aluminum	2
4	Ball	UPVC	1
5	seal	TPE	2
6	Gasket	NBR	2
7	Shaft assembly	UPVC+SS	1
8	Shaft O-Ring	NBR	2
9	Handle assembly	PPGF + Aluminum	1
10	Handle Logo cap	ABS	1
11	Handle Screw+Washer	SS	1 set
12	Long Bolt+Nut+ Washer	SS	4 set



## Flow Diversion



Diversion of flow of water in a piping system made easy